



CASE STUDY

Tableau Data Analytics tool facilitated Mhara Gaon Jagmag Gaon (MGJG) initiative ensure access to uninterrupted electricity in the State

Quick Summary

Data analysis played a crucial role in assessing the implementation status of the MGJG scheme in State of North India. By analyzing village and feeder coverage, household connection percentages, and division-wise details, the government can make informed decisions to address the gaps and improve electricity connectivity in rural areas. The insights gained from this analysis aided in monitoring progress and ensuring the successful implementation of the MGJG scheme, ultimately improving the quality of life for rural communities in the State.

About the Customer

The Mhara Gaon Jagmag Gaon (MGJG) scheme was launched in the State of India with the objective of providing 24x7 electricity supply to villages on an urban pattern. The scheme aims to ensure 100% household connections in all villages of the State in North India, enabling access to uninterrupted electricity. The State Government, which is responsible for the implementation, aimed to reach all districts in the State, divisions and individual villages.

Problem Statement:

One of the main challenges faced by the State Government was to ensure widespread coverage and connectivity across all villages.

Data collection and management were also challenging due to the need for accurate and up-to-date information on village electrification.

The efforts also required to analyze the implementation of the MGJG scheme in different villages of the State. The study aims to determine the number of villages and feeders covered under the scheme, identify villages and feeders not covered, and assess the percentage of households with connections. The analysis was also required to be conducted at various levels, including districts, divisions, sub-divisions, and individual villages

CRG Solutions - CASE STUDY

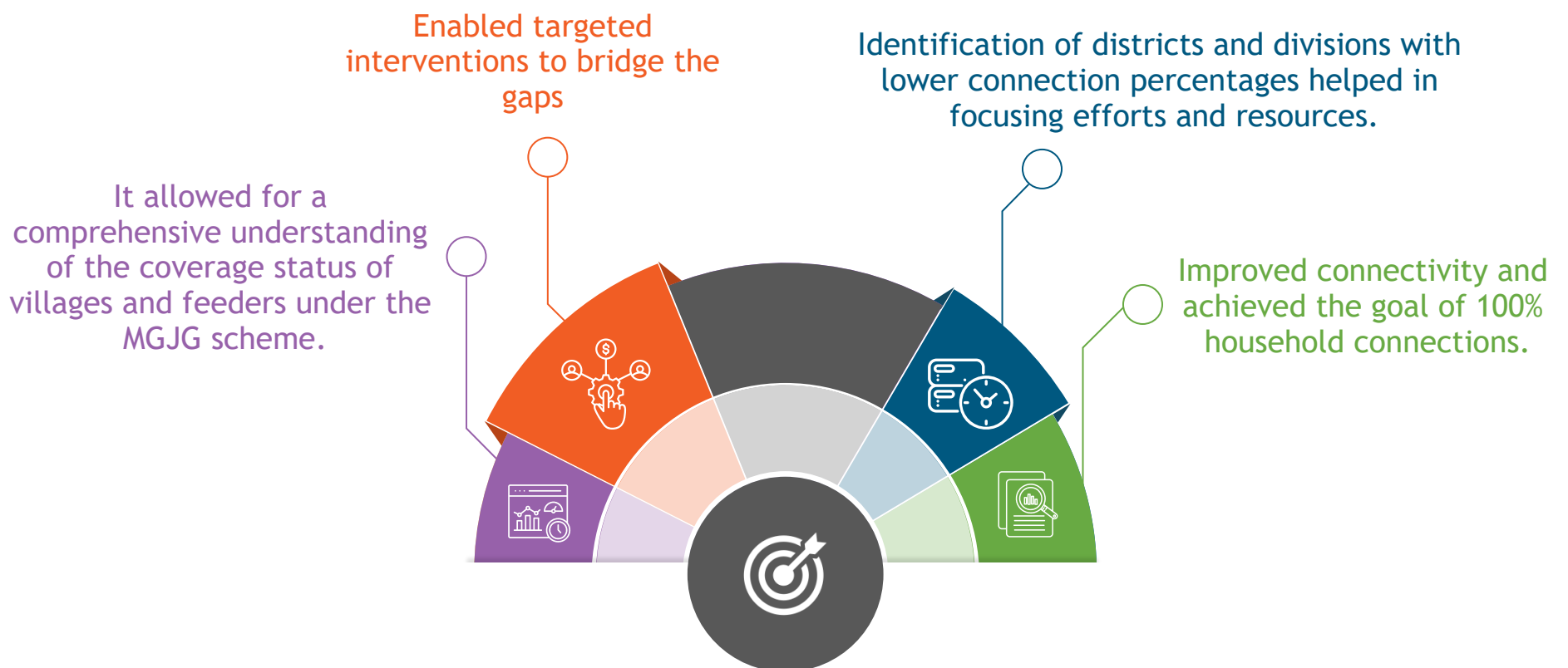
Solution:

To overcome these challenges, Tableau was utilized as the data analysis tool. Data was extracted from the government's Maria DB database and visualized using various charts and graphs. The analysis focused on the coverage status of villages and feeders under the MGJG scheme, as well as the percentage of households with and without electricity connections.

The analysis revealed that approximately 78% of villages in the State have access to 24x7 electricity supply under the MGJG scheme, while around 22% of villages are not covered. Similarly, 73% of feeders have uninterrupted power supply, while 27% of feeders are not covered. The study also highlighted the districts, divisions, and sub-divisions with the highest and lowest percentage of household connections.

Business Benefits:

The implementation of data analysis through Tableau provided several benefits to the Government and the Electricity Department.



A Trusted Solution Partner

to achieve

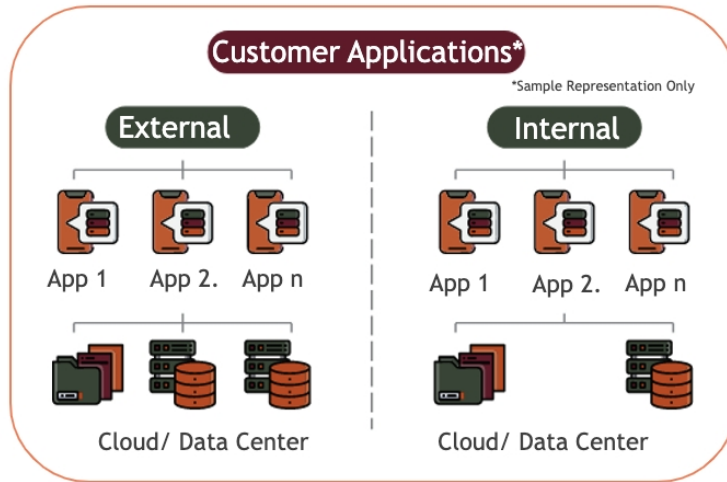
Business Excellence

About CRG solutions

We Cover

Analytics

We setup practices, tools to derive insights (customers, products, apps, teams) to enhance or optimize business effectiveness with the help of products like Tableau, Alteryx, PowerBI, Cloud and MLOPs



RPA

We automate all high volume and mundane tasks to reduce manual errors and to increase efficiency with the help of products like AA (Automation Anywhere), Yellow.ai

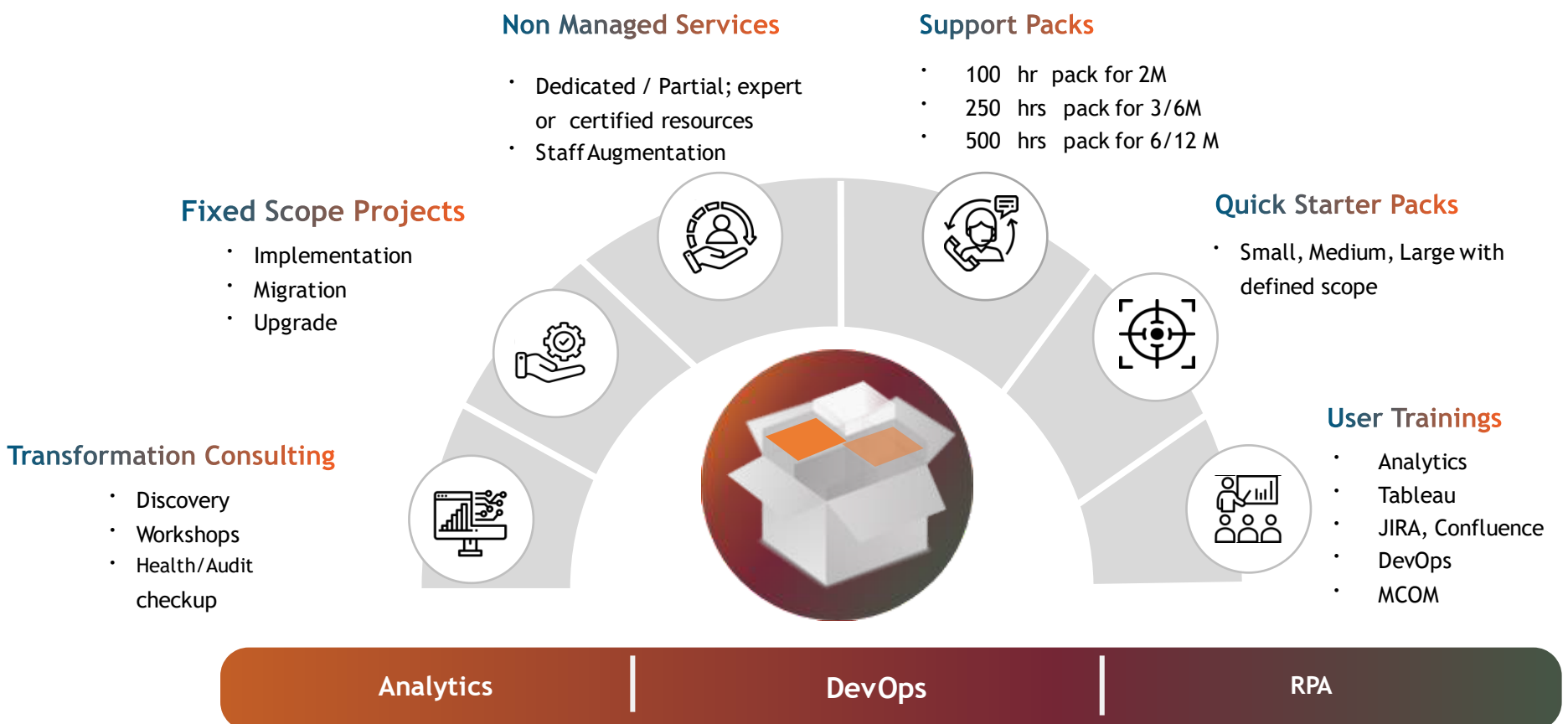


DevOps

We help streamline the application development and maintenance processes with custom project management practices and implementation of world class software tools like JIRA, Azure DevOps, Azure Cloud to improve team productivity



Services Portfolio



Our Socials



Scan me